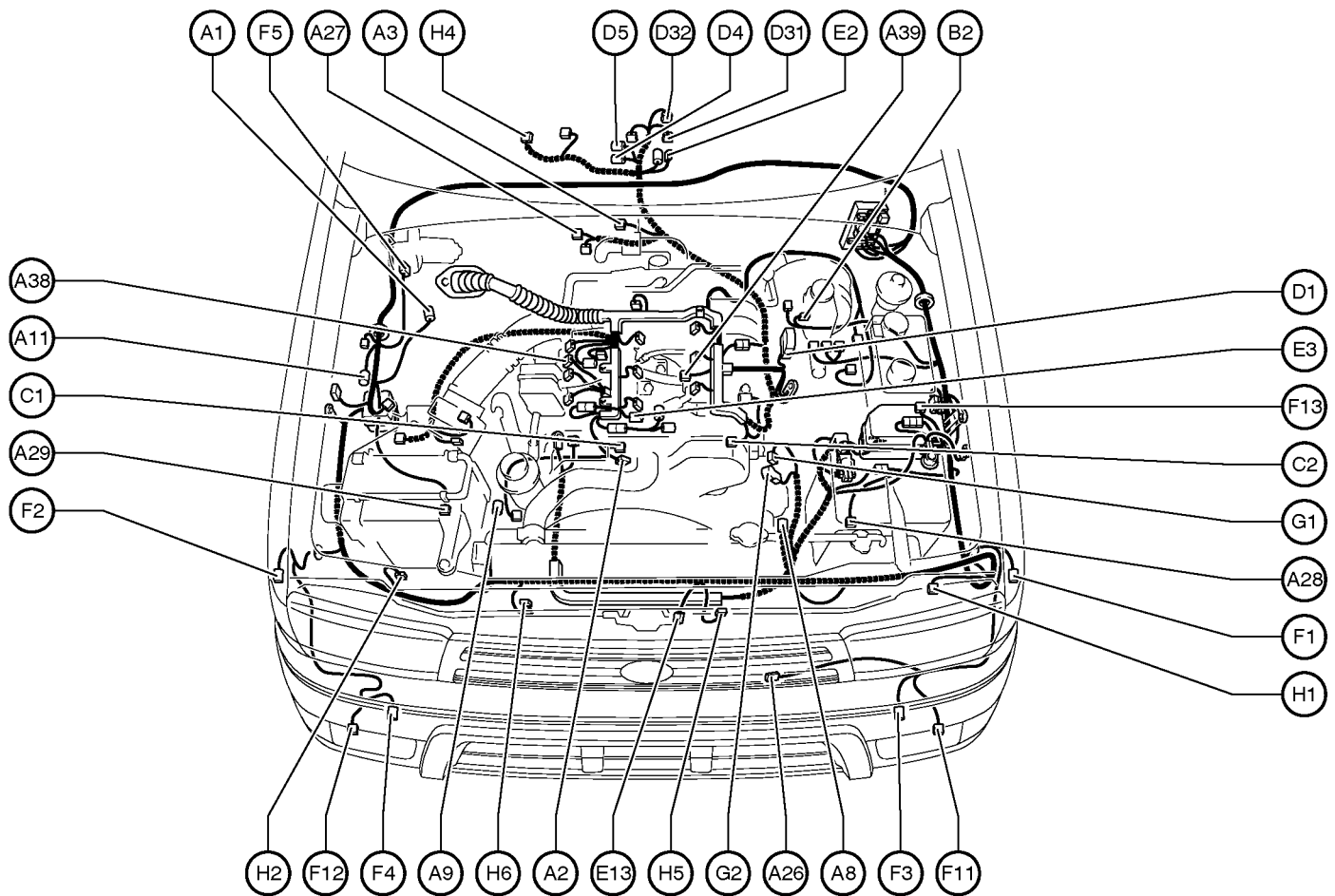


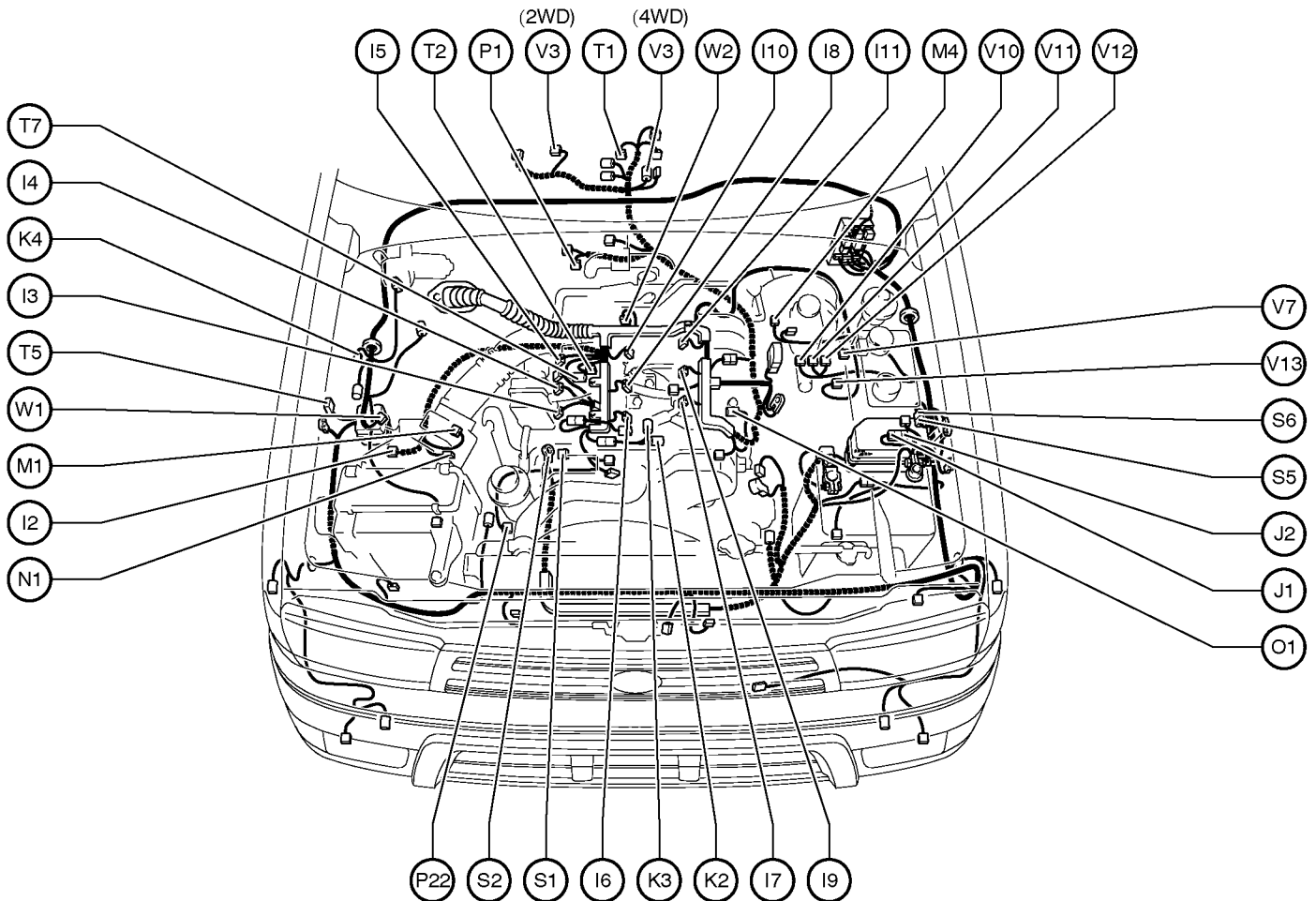
G ELECTRICAL WIRING ROUTING

Position of Parts in Engine Compartment



- | | |
|---|---|
| A 1 A/C Dual Pressure SW | E 2 Electronically Controlled Transmission Solenoid |
| A 2 A/C Magnetic Clutch | E 3 Engine Coolant Temp. Sensor |
| A 3 A/T Fluid Temp. Sensor | E13 Engine Hood Courtesy SW |
| A 8 ABS Speed Sensor Front LH | F 1 Front Parking Light LH |
| A 9 ABS Speed Sensor Front RH | F 2 Front Parking Light RH |
| A11 Auto Antenna Motor | F 3 Front Turn Signal Light LH |
| A26 A/C Ambient Temp. Sensor | F 4 Front Turn Signal Light RH |
| A27 Air Fuel Ratio Sensor | F 5 Front Wiper Motor |
| A28 Airbag Sensor Front LH | F11 Front Fog Light LH |
| A29 Airbag Sensor Front RH | F12 Front Fog Light RH |
| A38 Accel Position Sensor | F13 Fuse Box |
| A39 ADD Actuator | |
| B 2 Brake Fluid Level Warning SW | G 1 Generator |
| C 1 Camshaft Position Sensor | G 2 Generator |
| C 2 Crankshaft Position Sensor | |
| D 1 Data Link Connector 1 | H 1 Headlight LH |
| D 4 Detection SW (Transfer L4 Position) | H 2 Headlight RH |
| D 5 Detection SW (Transfer Neutral Position) | H 4 Heated Oxygen Sensor (Bank 1 Sensor 2) |
| D31 Detection SW (Transfer 4WD Position) | H 5 Horn LH |
| D32 Detection SW (Transfer H4L Position) | H 6 Horn RH |

Position of Parts in Engine Compartment



- I 2 Igniter
- I 3 Ignition Coil No.1
- I 4 Ignition Coil No.2
- I 5 Ignition Coil No.3
- I 6 Injector No.1
- I 7 Injector No.2
- I 8 Injector No.3
- I 9 Injector No.4
- I 10 Injector No.5
- I 11 Injector No.6

- J 1 Junction Connector
- J 2 Junction Connector

- K 2 Knock Sensor No.1
- K 3 Knock Sensor No.2
- K 4 Keyless Buzzer

- M 1 Mass Air Flow Meter
- M 4 Master Cylinder Pressure Sensor

- N 1 Noise Filter

- O 1 Oil Pressure SW

- P 1 Park/Neutral Position SW
- P22 Power Steering Oil Pressure SW

- S 1 Starter
- S 2 Starter
- S 5 Short Connector (VSC)
- S 6 Short Connector (VSC)

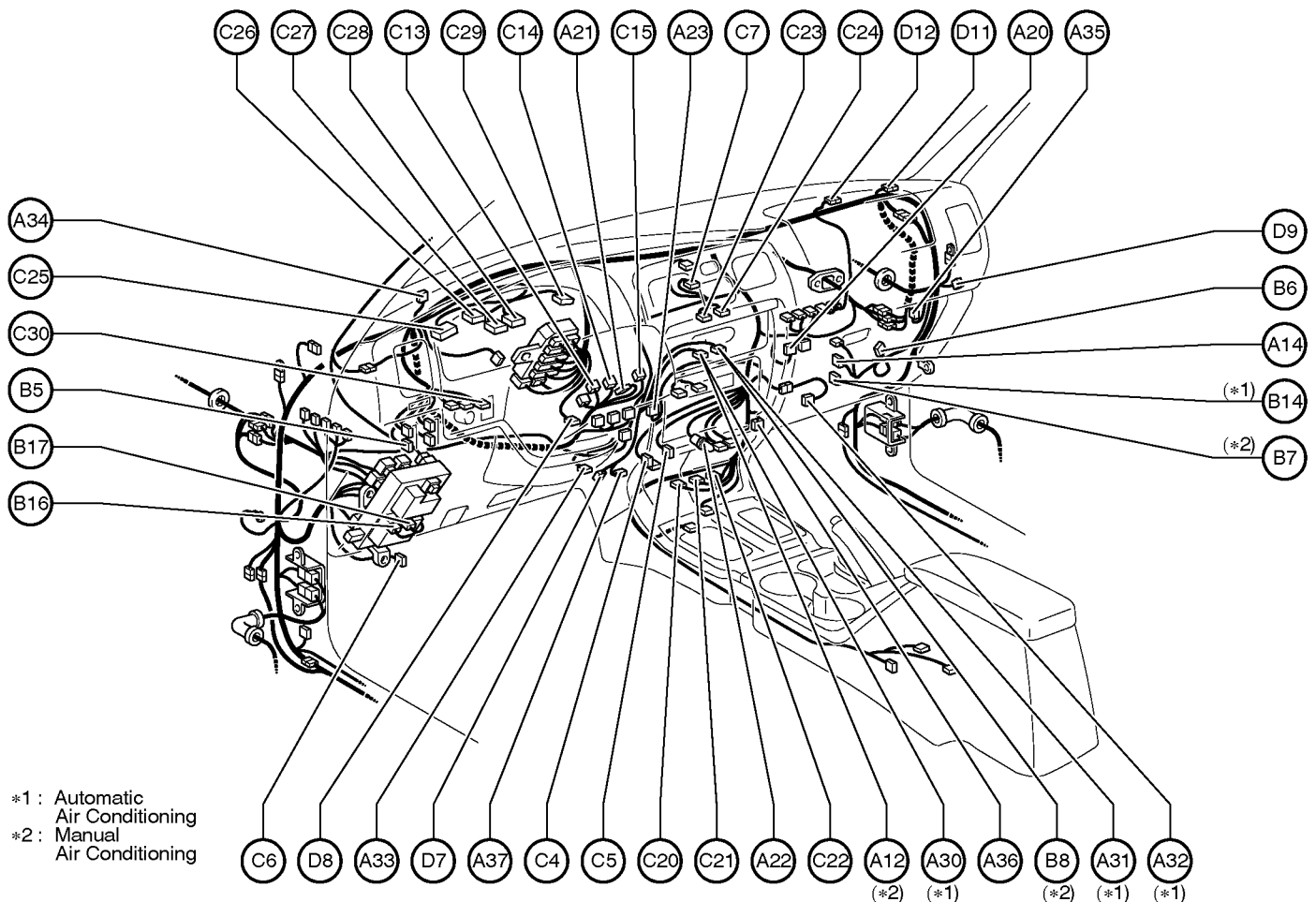
- T 1 2-4 Select Motor
- T 2 Throttle Position Sensor
- T 5 Theft Deterrent Horn
- T 7 Throttle Control Motor and Clutch

- V 3 Vehicle Speed Sensor
(Electronically Controlled Transmission)
- V 7 VSV (EVAP)
- V10 VSC Actuator
- V11 VSC Actuator
- V12 VSC Actuator
- V13 VSV (Canister Closed Valve)

- W 1 Washer Motor (w/o Daytime Running Light),
Washer Motor and Washer Level Warning SW
(w/ Daytime Running Light)
- W 2 Water Temp. Sender

G ELECTRICAL WIRING ROUTING

Position of Parts in Instrument Panel

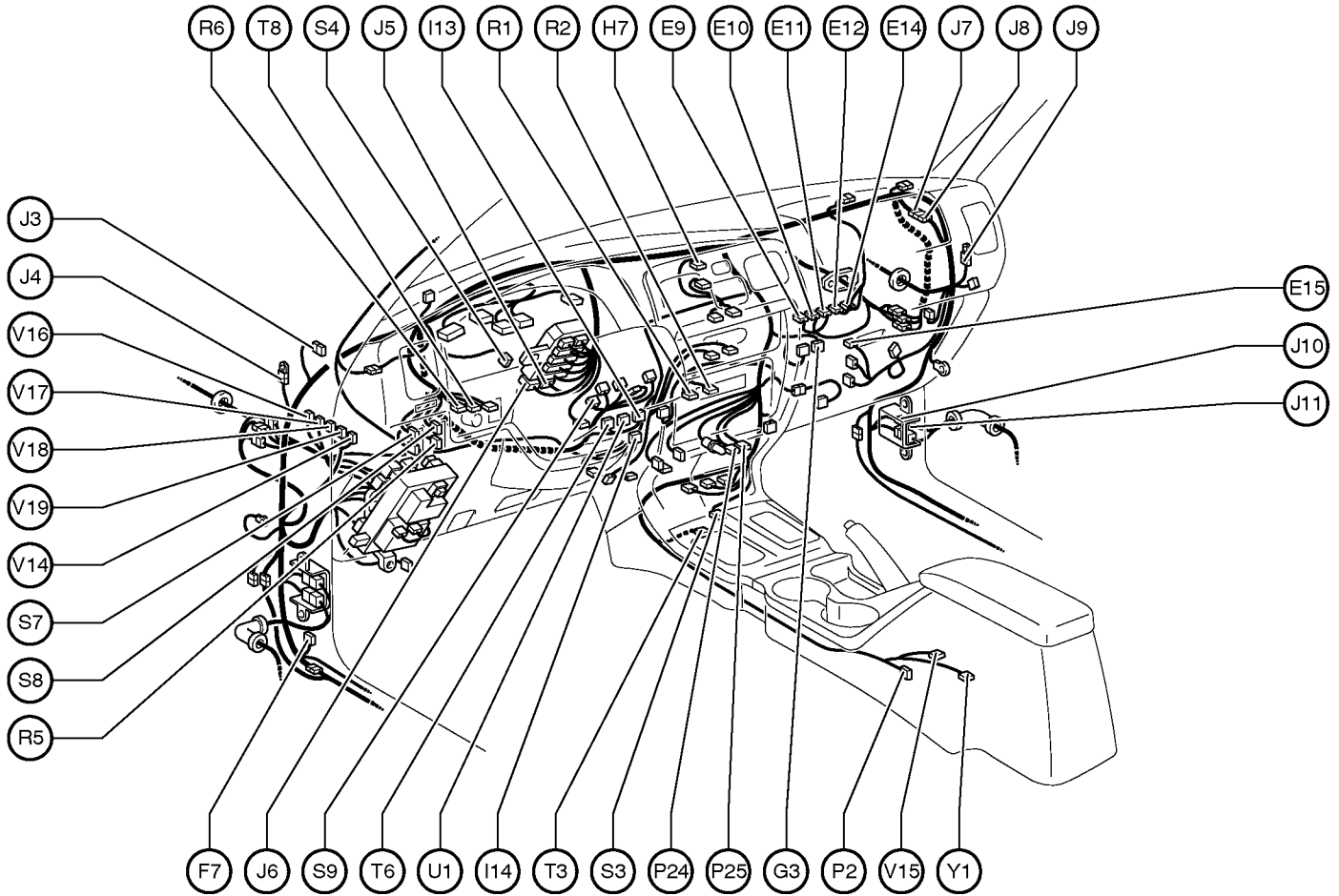


A 12 A/C Amplifier
A 14 A/C Thermistor
A 20 Airbag Squib (Front Passenger Airbag Assembly)
A 21 Airbag Squib (Steering Wheel Pad)
A 22 Ashtray Illumination
A 23 Auto Antenna Control Relay
A 30 A/C Amplifier
A 31 A/C Amplifier
A 32 A/C Magnetic Clutch Relay
A 33 A/C Room Temp. Sensor
A 34 A/C Solar Sensor
A 35 Air Inlet Control Servo Motor
A 36 Air Mix Control Servo Motor and A/C Water Temp. Sensor
A 37 Air Vent Mode Control Servo Motor

B 5 Back Window Lock SW
B 6 Blower Motor
B 7 Blower Resistor
B 8 Blower SW
B 14 Blower Motor Linear Controller
B 16 Body ECU
B 17 Body ECU

C 4 Cigarette Lighter
C 5 Cigarette Lighter Illumination
C 6 Circuit Opening Relay
C 7 Clock
C 13 Combination SW
C 14 Combination SW
C 15 Combination SW
C 20 Center Airbag Sensor Assembly
C 21 Center Airbag Sensor Assembly
C 22 Center Airbag Sensor Assembly
C 23 Center Cluster SW
C 24 Center Cluster SW
C 25 Combination Meter
C 26 Combination Meter
C 27 Combination Meter
C 28 Combination Meter
C 29 Combination Meter
C 30 Center Diff. Lock SW
D 7 Data Link Connector 3
D 8 Daytime Running Light Relay (Main)
D 9 Daytime Running Light Relay No.4
D 11 Diode (Back Window)
D 12 Diode (Daytime Running Light No.1)

Position of Parts in Instrument Panel



E 9 Engine Control Module
 E 10 Engine Control Module
 E 11 Engine Control Module
 E 12 Engine Control Module
 E 14 Engine Control Module
 E 15 Extra High Speed Relay

F 7 4WD ECU

G 3 Glove Box Light

H 7 Hazard SW

I 13 Ignition Key Cylinder Light

I 14 Ignition SW

J 3 Junction Connector
 J 4 Junction Connector
 J 5 Junction Connector
 J 6 Junction Connector
 J 7 Junction Connector
 J 8 Junction Connector
 J 9 Junction Connector
 J 10 Junction Connector
 J 11 Junction Connector

P 2 Parking Brake SW
 P 24 Power Outlet Front LH
 P 25 Power Outlet Front RH

R 1 Radio and Player (Built-In Type Amplifier) or
 Stereo Power Amplifier (Separate Type Amplifier)
 R 2 Radio and Player (Built-In Type Amplifier) or
 Stereo Power Amplifier (Separate Type Amplifier)
 R 5 Remote Control Mirror SW
 R 6 Rheostat

S 3 Shift Lock Control Computer
 S 4 Stop Light SW
 S 7 Seat Heater SW LH
 S 8 Seat Heater SW RH
 S 9 Steering Sensor

T 3 2-4 Select SW
 T 6 Transponder Key Amplifier
 T 8 TRAC Off SW

U 1 Unlock Warning SW

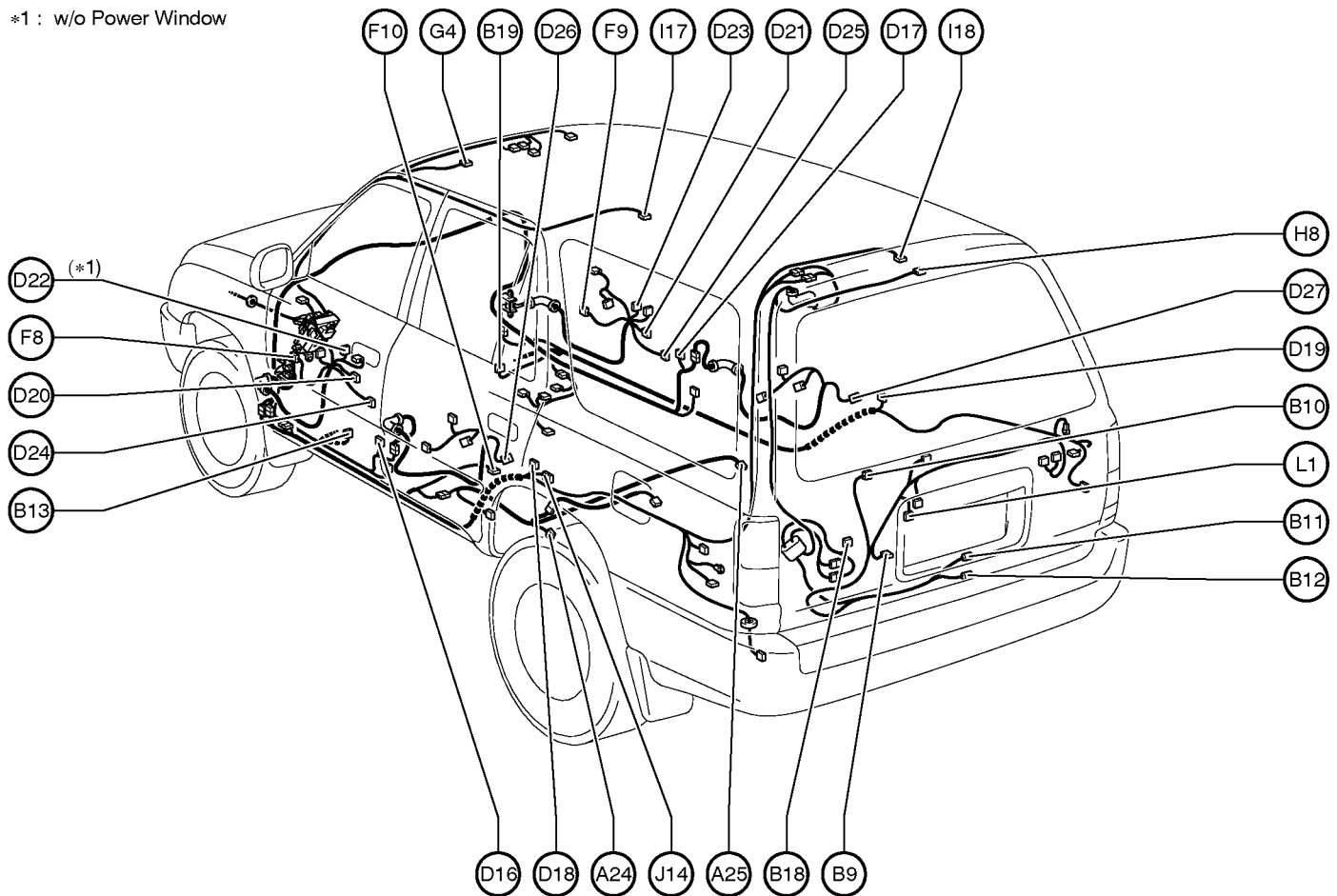
V 14 VSC Buzzer
 V 15 VSC Deceleration Sensor
 V 16 VSC ECU
 V 17 VSC ECU
 V 18 VSC ECU
 V 19 VSC ECU

Y 1 Yaw Rate Sensor

G ELECTRICAL WIRING ROUTING

Position of Parts in Body

*1 : w/o Power Window



A24 ABS Speed Sensor Rear LH
A25 ABS Speed Sensor Rear RH

B 9 Back Door Courtesy SW
B10 Back Door Lock Motor and
Back Door Unlock Detection SW
B11 Back Window Limit SW
B12 Back Window Motor
B13 Buckle SW LH (w/o Power Seat)
B18 Back Door ECU
B19 Buckle SW RH (w/o Power Seat)

D16 Door Courtesy SW Front LH
D17 Door Courtesy SW Front RH
D18 Door Courtesy SW Rear LH
D19 Door Courtesy SW Rear RH
D20 Door Key Lock and Unlock SW Front LH
D21 Door Key Lock and Unlock SW Front RH
D22 Door Lock Control SW Front LH (w/o Power Window)
D23 Door Lock Control SW Front RH
D24 Door Lock Motor and Door Unlock Detection SW
Front LH

D25 Door Lock Motor and Door Unlock Detection SW
Front RH
D26 Door Lock Motor and Door Unlock Detection SW
Rear LH
D27 Door Lock Motor and Door Unlock Detection SW
Rear RH

F 8 Front Door Speaker LH
F 9 Front Door Speaker RH
F10 Fuel Sender and Fuel Pump

G 4 Garage Door Opener

H 8 High Mounted Stop Light

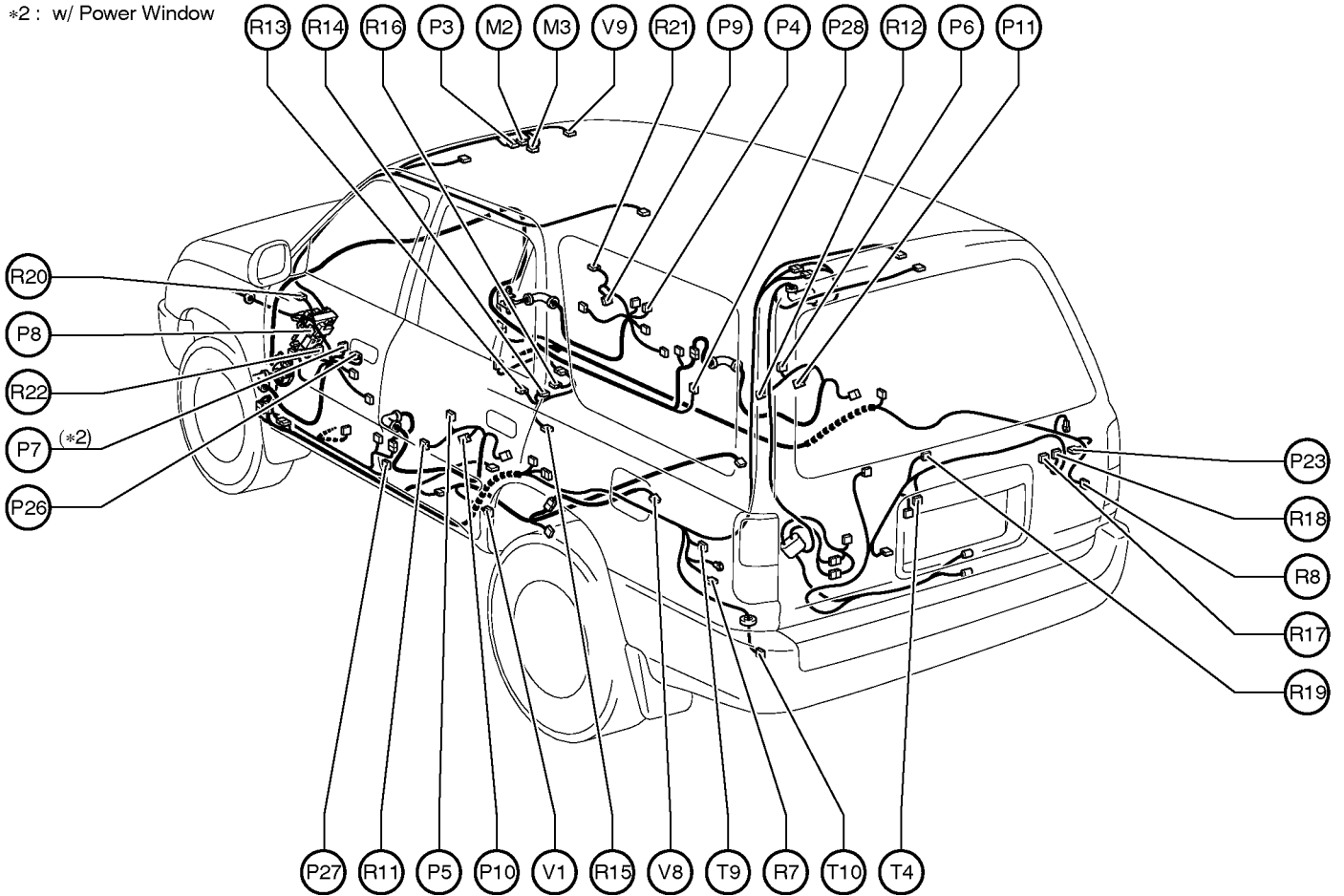
I 17 Interior Light (Front)
I 18 Interior Light (Rear)

J 14 Junction Connector

L 1 License Plate Light

Position of Parts in Body

*2 : w/ Power Window



M 2 Moon Roof Control Motor and Limit SW
M 3 Moon Roof Control Relay and SW

P 3 Personal Light
P 4 Power Window Control SW Front RH
P 5 Power Window Control SW Rear LH
P 6 Power Window Control SW Rear RH
P 7 Power Window Master SW
P 8 Power Window Motor Front LH
P 9 Power Window Motor Front RH
P10 Power Window Motor Rear LH
P11 Power Window Motor Rear RH
P23 Power Outlet (Rear)
P26 Power Window Master SW
P27 Pretensioner LH
P28 Pretensioner RH

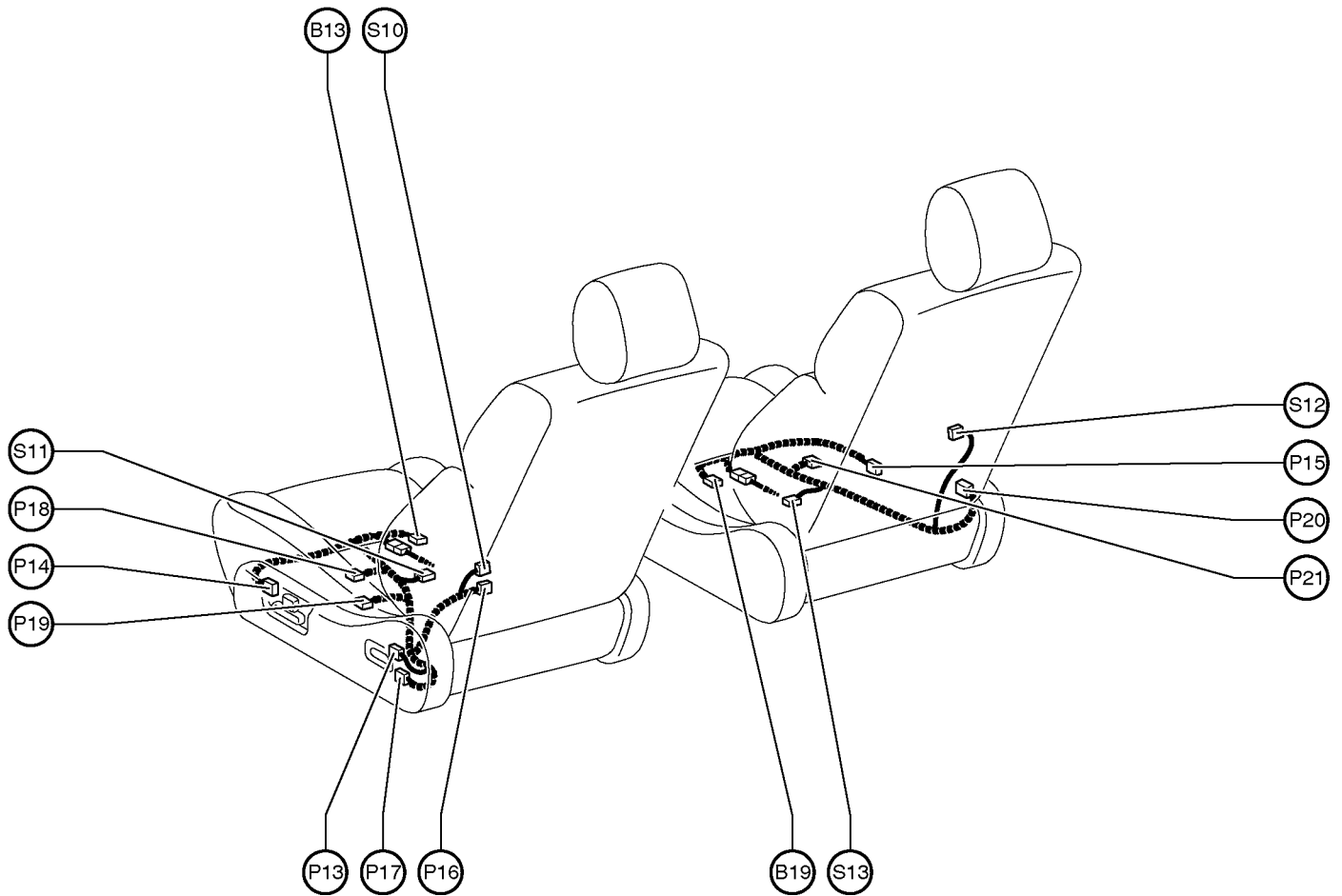
R 7 Rear Combination Light LH
R 8 Rear Combination Light RH
R11 Rear Door Speaker LH
R12 Rear Door Speaker RH
R13 Rear Heater Blower Motor
R14 Rear Heater Blower Resistor
R15 Rear Heater Blower SW
R16 Rear Heater Relay
R17 Rear Window Defogger
R18 Rear Window Defogger
R19 Rear Wiper Motor
R20 Remote Control Mirror LH
R21 Remote Control Mirror RH
R22 Remote Control Mirror SW

T 4 Tailgate Control SW
T 9 Trailer Converter
T10 Trailer Socket

V 1 Vapor Pressure Sensor
V 8 VSV (Vapor Pressure Sensor)
V 9 Vanity Light RH

G ELECTRICAL WIRING ROUTING

Position of Parts in Seat



B13 Buckle SW LH (w/ Power Seat)

B19 Buckle SW RH (w/ Power Seat)

P13 Power Seat Control SW (Driver's Seat Lumbar Support)

P14 Power Seat Control SW (Driver's Side)

P15 Power Seat Control SW (Front Passenger's Side)

P16 Power Seat Motor (Driver's Seat Lumbar Support)

P17 Power Seat Motor (Driver's Seat Reclining Control)

P18 Power Seat Motor (Driver's Seat Slide Control)

P19 Power Seat Motor (Driver's Seat Vertical Control)

P20 Power Seat Motor

(Front Passenger's Seat Reclining Control)

P21 Power Seat Motor

(Front Passenger's Seat Slide Control)

S10 Seat Heater (Driver's Seat Back)

S11 Seat Heater (Driver's Seat Cushion)

S12 Seat Heater (Front Passenger's Seat Back)

S13 Seat Heater (Front Passenger's Seat Cushion)

